




Health




~~E~~Health
Removing the “E-” from E-Health

Australian Government
Department of Broadband, Communications and the Digital Economy
Australian Research Council

NICTA Funding and Supporting Members and Partners
ANU UNSW Industry & Investment

NICTA 012


Conclusion



- It's not special: eHealth is just health.
- Thou shalt not re-invent the wheel.
- Leadership & Change-management: Stage, sustain, improve
- **Telehealth is a platform that supports adoption of eHealth.**
- **Shift philosophy not technology**

NICTA Copyright 2012 From: Imagination to Impact 2

Who is NICTA?





- Australia's ICT research center of excellence
 - Research excellence and wealth creation
 - Making fundamental advances in ICT that can underpin the development of globally competitive products, processes and services.
 - Contributing skills and outcomes that are changing the profile of our ICT industry.
 - 700 people (300 research staff)
 - 5 laboratories


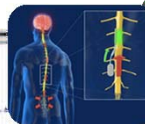
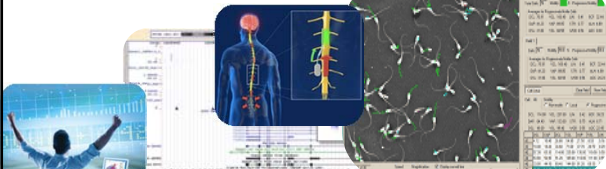


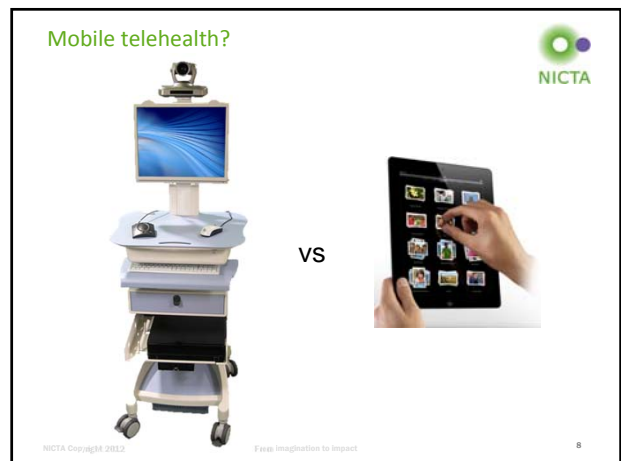
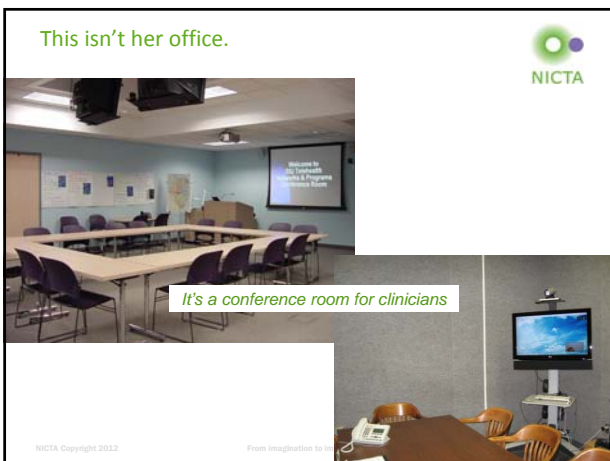

From Imagination to Impact

Health

Transforming innovative technologies to advance the understanding of human diseases and to improve the health and well being of Australians



eHealth is here.



Click here to log in

You may be aware that Canberra with electronic access to your records with fast and convenient electronic access to your health care needs in the most relevant laws and regulations, and your privacy is protected.

FR 7Hz
R1
20
81%
C 05
P Med
Res

CE
35%
350Hz
NF 20Hz
Low

PULSE.IT eHealth ready!

GREEN TICK FOR THE PCEHR IN ACUTE CARE

ROI - LUMP TRNS
LT UPPER ARM INNER ASPECT



NICTA Copyright 2012

Smart health space challenge: 20 bed hospital





- Health systems suffer from 20:80 rule
 - 20% of the "work" occupies 80% of the workforce (acute care)
 - 80% of the "work" is only given 20% of the funds (chronic, aged, community)
- Better use of information is the only solution




COMMUNITY WELLNESS SERVICES

Social TV: content recommendation for health





Clinical Information Processing



Machine Learning

enterprise infrastructure
operations
objectives
capitaliz
manage
connections
solution stakeholder



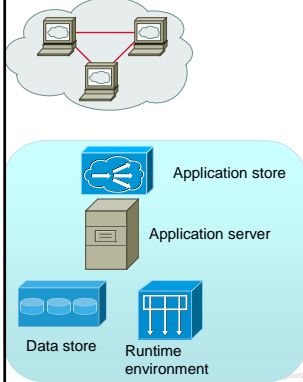

Automatic analysis of fungal outbreaks

NICTA Copyright 2012 From Imagination to Impact 12

Social media impact: participatory medicine



How to run the cluster? Epicure



- Secure data, application and storage service
- All algorithms ARE data
- Input, and output securely stored

© 2012 NICTA. All rights reserved. From Imagination to Impact




Interoperability, technology adoption, community care

NATIONAL E-HEALTH LIVING LABORATORY

Embedding ICT in the next generation's workflow

NICTA Copyright 2012 From Imagination to Impact 15




“Health informatics has been technology driven and IT creators have misconceptions about how clinical work is done, what characterises workers and their environment, what problems they face, and how they will use the artifact.”

Review, Reid Hospital EMR Viewer adoption

NICTA Copyright 2012 From Imagination to Impact 16

New Faculty of Health Building, part of new Health precinct


Teaching Clinics + Lab


2-Storey GP super-clinic

Live cross to mobile telehealth clinic






What & why?



- Demonstrate ICT in-situ (not in research office)
- Real problems: engage clinicians early and often
- Data interoperability: big-data is your friend....
- Developer community: virtual
 - Vendors, SME's, researchers, clinicians, government (state + federal)
 - Many partners
 - Including internationals
- Teaching and clinical training with ICT embedded

NICTA Copyright 2012 From Imagination to Impact 19




Like this?

NICTA is hiring.

Work here




Change this:

